

# PersonalTracker

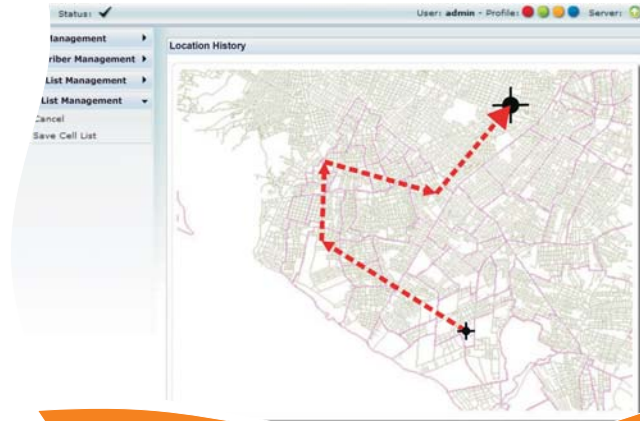
Lawful interception has become these days a requirement for any operation. The need of a tracking system has a contundent answer with LeibICT Personal Tracker, a Camel 1, 2, 3 and 4 enable system capable of tracking the location of a mobile station in real time.

## How it works

Through a simple web based on Ajax, the operator adds the phone numbers of the subscriber to be tracked into an internal list.

While the UMTS/GSM network stores the location information on the VLRs nodes, the Personal Tracker platform queries the location of the mobile station through 3GPP MAP 29.002. Camel4 "current location" or Camel 1-2-3 "location information" with paging are optional ways to discover the current location of the mobile.

There is no need to install any application on the subscriber's mobile device.



### Benefits

- Fast and reliable tracking of subscribers
- Easy to read, map based reports
- Hour, Day, Week and Months time spams
- Mutiple persons
- Expandable to other functionalities

## Product description

The LeibICT Personal Tracker platform is a system capable of tracking multiple mobile stations at the same time and produce real time reports and map based historical moves.

The simple Ajax based Web represents a very fast way to find where the person is and where it was in the last hours, days weeks and even months.

Intelligent algorithm determines the interval between queries to the HLR/VLR avoiding unnecessary usage of the network resources.

### Features

- UMTS/GSM Network Support
- High Performance
- 128 LSL, 4 HSL/ATM or HDLC
- Sigtran Support
- O&M Ajax Web Interface
- Camel 1, 2, 3 and 4 support
- Redundancy
- Linux Support

